



IPX4

Model: V-806

Power: Dc 5V 5W

Lithium battery: 1200mAh

Charging time: 2 hours

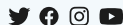
info@thecutbuddy.com

©2022 The Cut Buddy

THECUTBUDDY.COM



Let's Connect
@thecutbuddy



TRIM BUDDY

ADJUSTABLE HAIR & BEARD TRIMMER



USER MANUAL

RoHS CE

MADE IN CHINA

TRIM BUDDY

ADJUSTABLE HAIR & BEARD TRIMMER



ON/OFF

BLADE

SHAPING GUIDE



FOUR GEAR POSITIONS

0.2mm

0.9mm

1.6mm

2.3mm

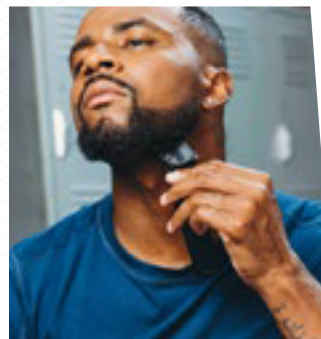
LCD DISPLAY

USB POWER CORD

POWER PORT

HOW TO USE THE TRIM BUDDY

- 1 Make sure hair or beard are clean and dry when being cut
- 2 Let the trimmer run for a short time before starting to trim
- 3 Align guard comb teeth with trimmer blades and then pop guard into place
- 4 Slide the cutting head with a slight tilt over your skin without applying pressure to trim your hair or beard
- 5 Only cut small amounts of hair at a time (the cutting head will jam if you try to work too quickly or try to cut too much hair at one time)
- 6 Cut the hair progressively until you reach the desired length
- 7 Finely trim hair by using cutting head without attachment



CARING FOR YOUR TRIMMER

CLEANING

- Disconnect the power cord from the trimmer
- Remove the comb attachment
- Clean the main body of the beard trimmer with a damp cloth
- Brush the hair from the main body of the device and from around the blade

STORING

- Store the trimmer and power cable in a dry area with low humidity and away from direct sunlight and other heat sources
- Keep the oil and brush away from children

OILING

- Oil the trimmer head from time-to-time if you use the trimmer regularly
- Use non-corroding oil, such as sewing machine oil
- Remove the comb attachment
- Apply 1-2 drops of oil between the cutting teeth
- Turn the trimmer briefly on and off to distribute the oil
- Remove any excess oil by wiping with a cloth



BATTERY DISPOSAL

The battery used in this device contains materials that will pollute the environment. If you need to dispose, please dismantle the battery and turn it in to a government-designated collection place.

Before dismantling the battery, ensure the trimmer is unplugged and does not retain any electricity (turn on the shaver until the motor stops.)

To remove the battery, loosen the rear cover with a screwdriver and dismantle the battery with an electric iron. After dismantling the battery, do not connect the shaver and its charging plug to the AC outlet.

SAFETY INSTRUCTIONS

⚠️ TO REDUCE THE RISK OF BURNS, ELECTRIC SHOCK, FIRE, OR INJURY

- Children over 8 years of age and people without the necessary knowledge or experience or those with physical, mental, or sensory disabilities can use this device if they have received proper instructions and are supervised and understand the dangers involved in their use. Children should be supervised so they do not play with the device. Cleaning and maintenance should not be carried out by children, unless they are over 8 years old and supervised. Keep the trimmer and its accessories out of the reach of children under 8 years of age. Do not leave plastic bag or packaging items within reach of children.
- This device is only intended for clipping human scalp hair and for trimming and grooming the human beard, mustache, sideburns, nose hair and ear hair. Do not use it for another purpose. Never use on eyelashes.
- The device must only be supplied with a very low safety voltage indicated in the technical specifications and marked on the device. Otherwise, you may damage the device. Check if the voltage indicated on the device corresponds to the voltage of the local network before connecting the device.
- Do not use or recharge trimmer near bathtubs, showers, buckets, or other containers of water, as the proximity of the water can be dangerous even if it is not running. Never immerse the trimmer or charging cable in liquid or rinse it under the tap. Do not plug in or unplug the trimmer with wet hands. Do not use trimmer if it has fallen into water, or try to catch the trimmer if it has fallen into water—unplug it immediately from the socket. Make sure that the plug, power cord, and trimmer do not get wet. Place and use the trimmer on a surface that is resistant to liquids.
- Keep the trimmer, plug, and power cord away from hot surfaces.
- Charge, use, and store the trimmer in a place between 60° and 95° F (15°-35° C) or it will not charge efficiently. If the trimmer is subjected to a major change in temperature, pressure, or humidity, let it acclimatize for 30 minutes before using.
- Do not use the trimmer, power cable, or any other component if damaged. It must be replaced by the manufacturer, by its after-sales service or by similar qualified personnel in order to avoid danger. Do not use the trimmer when one of the attachments or combs is damaged or broken as this may cause injury. Only use the USB line supplied to charge the appliance. If the USB line is damaged, always have it replaced with one of the original type in order to avoid a hazard.
- Place the appliance and its charger on a stable surface while charging. Do not twist or wrap the cable around the device. Do not leave the trimmer unattended when it is plugged into an outlet, unless it is charging, and keep it out of reach of children especially during charging. Do not over-charge the device, as this may damage the battery.
- Do not disassemble the unit as this may cause serious injury. The battery must be disposed of correctly (see section regarding battery disposal).
- Place the trimmer and its charger on a stable surface while charging. Do not twist or wrap the cord around the device.
- Ensure the trimmer is switched off, unplugged, and removed from the charging cable before cleaning. Do not touch the moving parts of the trimmer in operation.